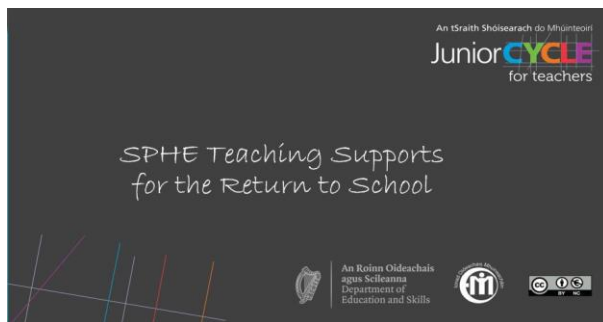


Useful Links for Teacher Experience in the SPHE Classroom



A recording of the previous JCT SPHE webinar *SPHE Teaching Supports for the Return to School* is now available on the JCT website wellbeing section [here...](#) and the JCT Youtube channel link [here...](#)



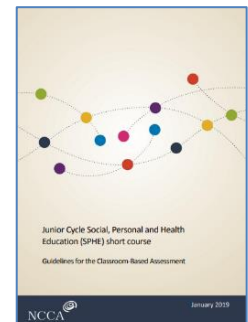
JCT SPHE supports and resources at www.jct.ie



JCT updated teaching and learning strategies to support active engagement [here...](#)

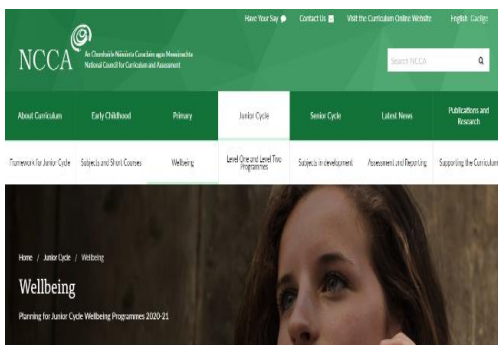


NCCA Social, Personal & Health Education Short Course Specification for Junior Cycle [here...](#)

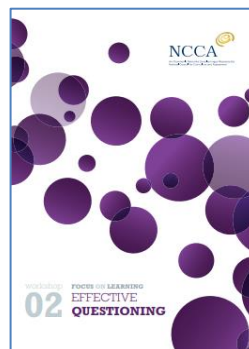


NCCA Junior Cycle Social, Personal and Health Education (SPHE) Assessment Guidelines [here...](#)

Useful Links for Teacher Experience in the SPHE Classroom



Wellbeing section of the National Council for Curriculum and Assessment website [here...](#)



NCCA Focus on learning booklet on effective questioning [here...](#)



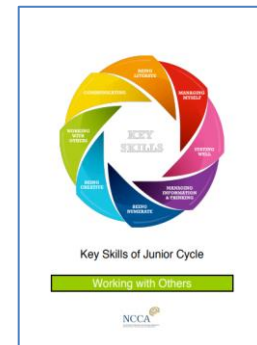
NCCA Focus on learning toolkit [here...](#)



NCCA Back to School Lessons [here...](#)



NCCA Considerations in Planning for Junior Cycle Wellbeing 2020-2021 [here...](#)



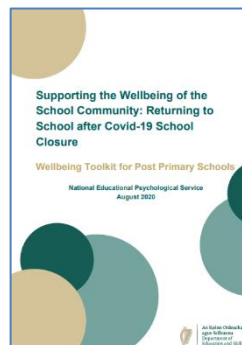
NCCA key skills booklet Working With Others [here...](#)

Other key skills booklets [here...](#)

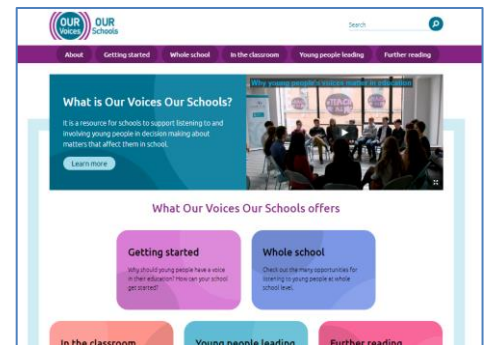
Useful Links for Teacher Experience in the SPHE Classroom



NEPS webinar Returning to School after Covid-19 school closure: Supporting the Wellbeing of the School Community [here...](#)



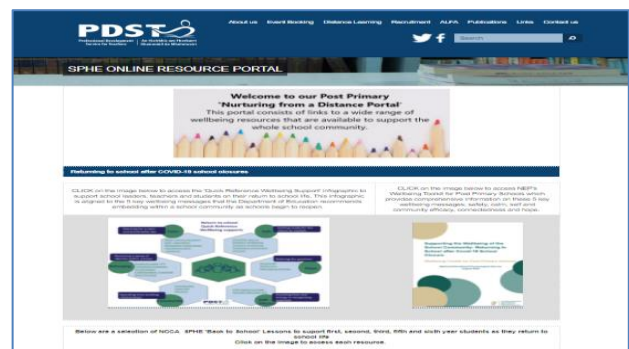
NEPS Wellbeing Toolkit for Post Primary Schools [here...](#)



Student Voice – Our Voices Our Schools website [here...](#)



Wellbeing resources section of the gove.ie website [here...](#)



PDST SPHE online resource portal [here...](#)