

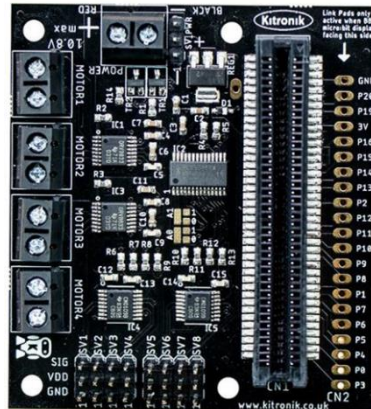
Supporting Mechatronics in Engineering

3rd November 5- 6:15pm

Components list

*These items will be used on the night of our elective, if you have access to them, we ask you to bring them with you on the night. If you do not have access to them, we will show how to use simulation to follow along:

1. All in One robotics board



2.A servo motor

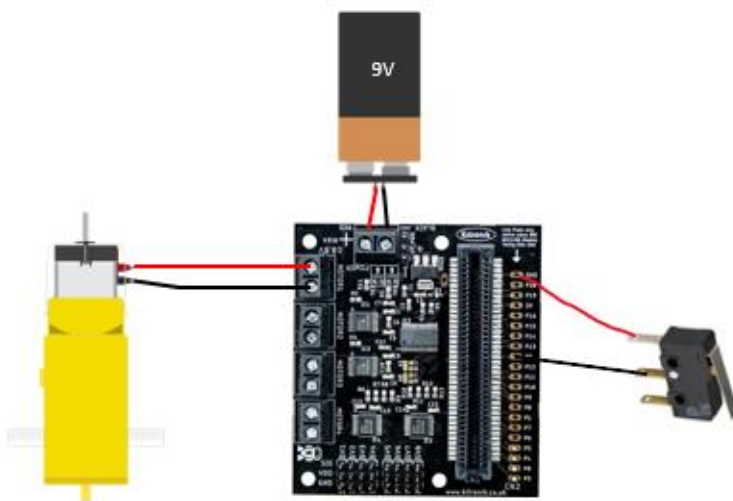
(180 degrees or continuous)



3.A DC Motor



4. A Limit switch



Before engaging with the webinar, it would help the evening go more smoothly if you had attached the motor and the battery to the terminal block

The limit switch will need to be soldered into position.

GND to be soldered to the COM leg of the limit switch

P2 to be soldered to the N.O. leg of the limit switch as shown

**We recommend watching the Webinar on a phone and have use of a second device i.e. a laptop or desktop, as it will be easier to engage with coding and following along on screen